

Nesma

Inspiring Tomorrow

MONSEF | JBEIL



Resma

Welcome to Nesma

Approaching Nesma, you'll be greeted by a palm-lined driveway and vibrant Mediterranean nature. The villa seamlessly combines contemporary sophistication with traditional charm. Inside, you'll find spacious living space features a grand fireplace and expansive windows showcasing uninterrupted sea views each with its own overflow swimming pool. Nesma is a luxurious sanctuary offering an unparalleled coastal living experience in the prestigious hill of Monsef.

With breathtaking views, lavish interiors, and a range of amenities, this villa promises an unforgettable Mediterranean escape.



STAND ALONE
VILLAS



TWIN HOUSES



SWIMMING
POOL



PARKING
SPACES





Nesma amenities

- Panoramic sea view
- Landscaping & gardening
- Prestigious finishing
- Basements & private parking area





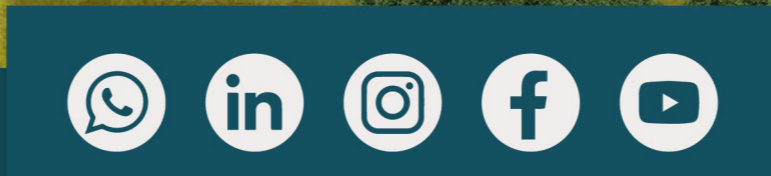


STANDALONE
BLOCK C

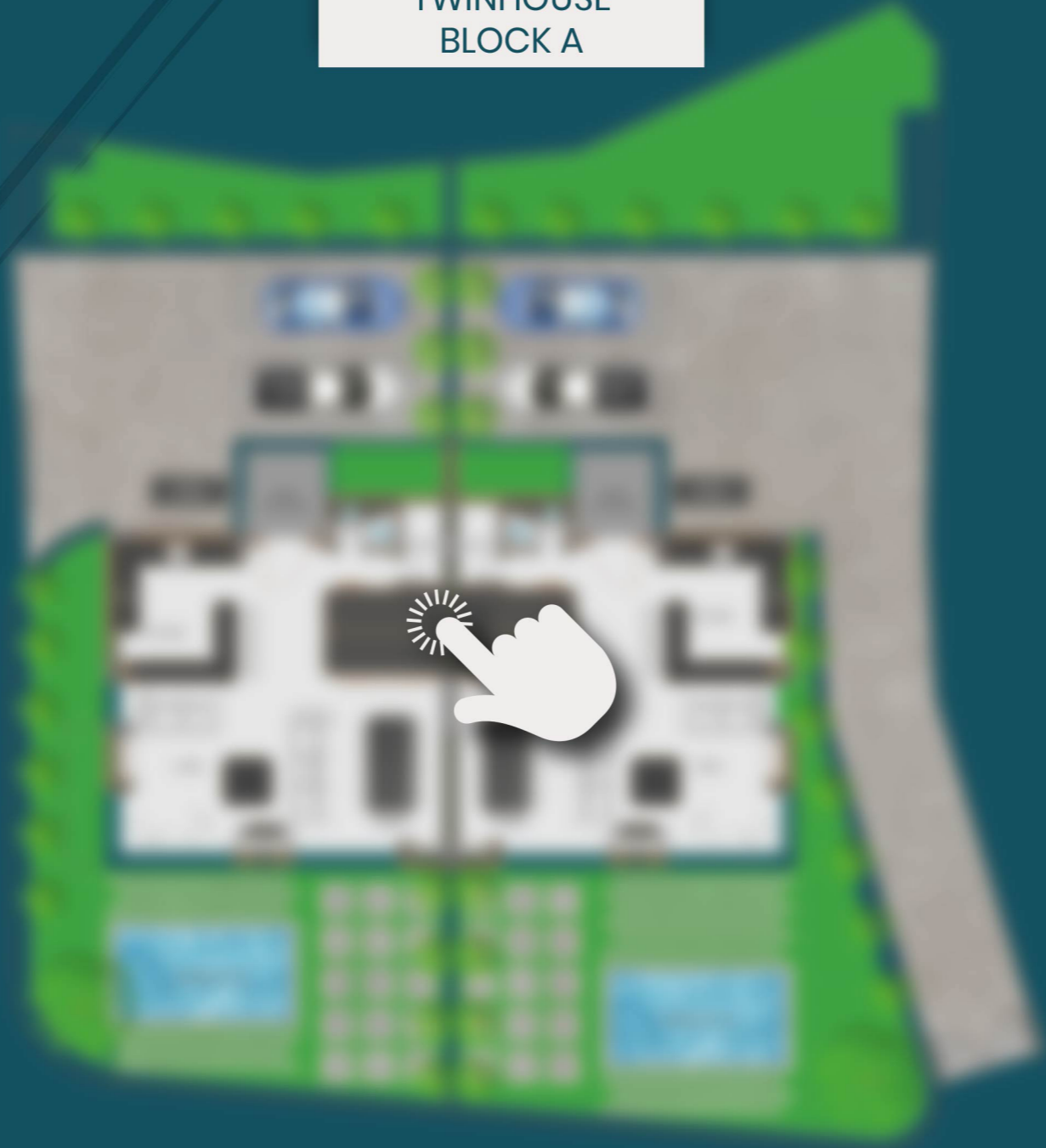
STANDALONE
BLOCK B

TWINHOUSE
BLOCK A NORTH

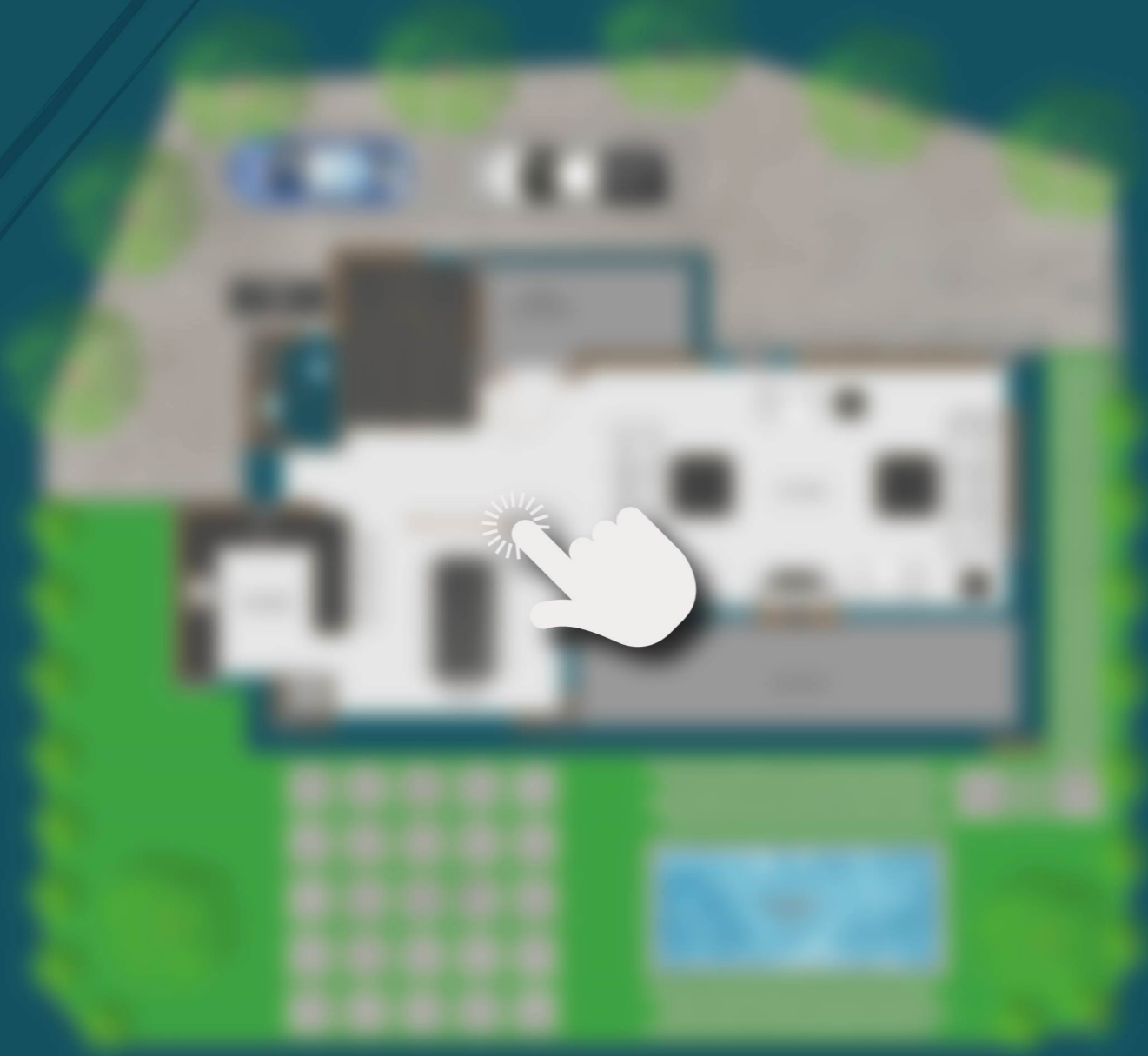
TWINHOUSE
BLOCK A SOUTH



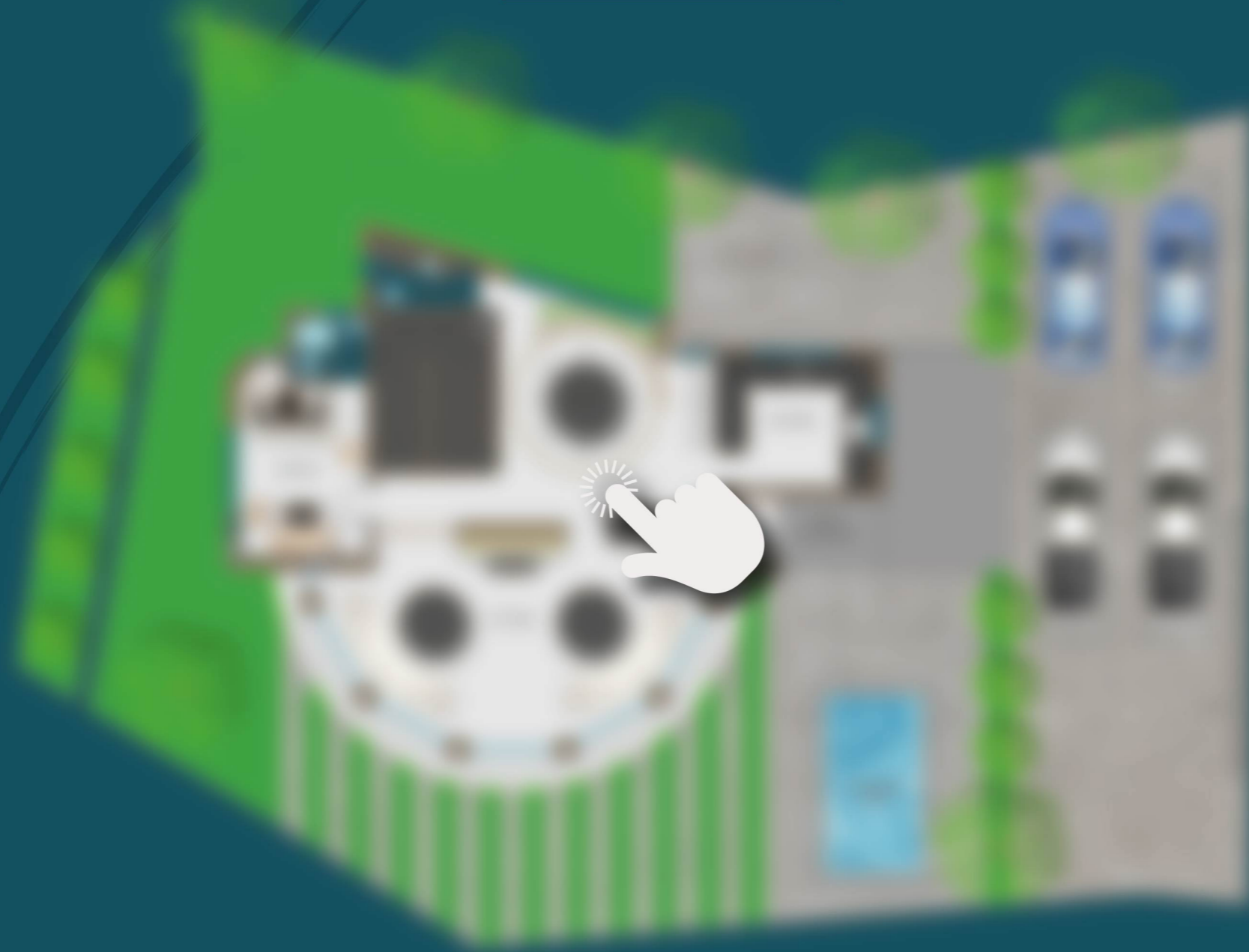
TWINHOUSE
BLOCK A



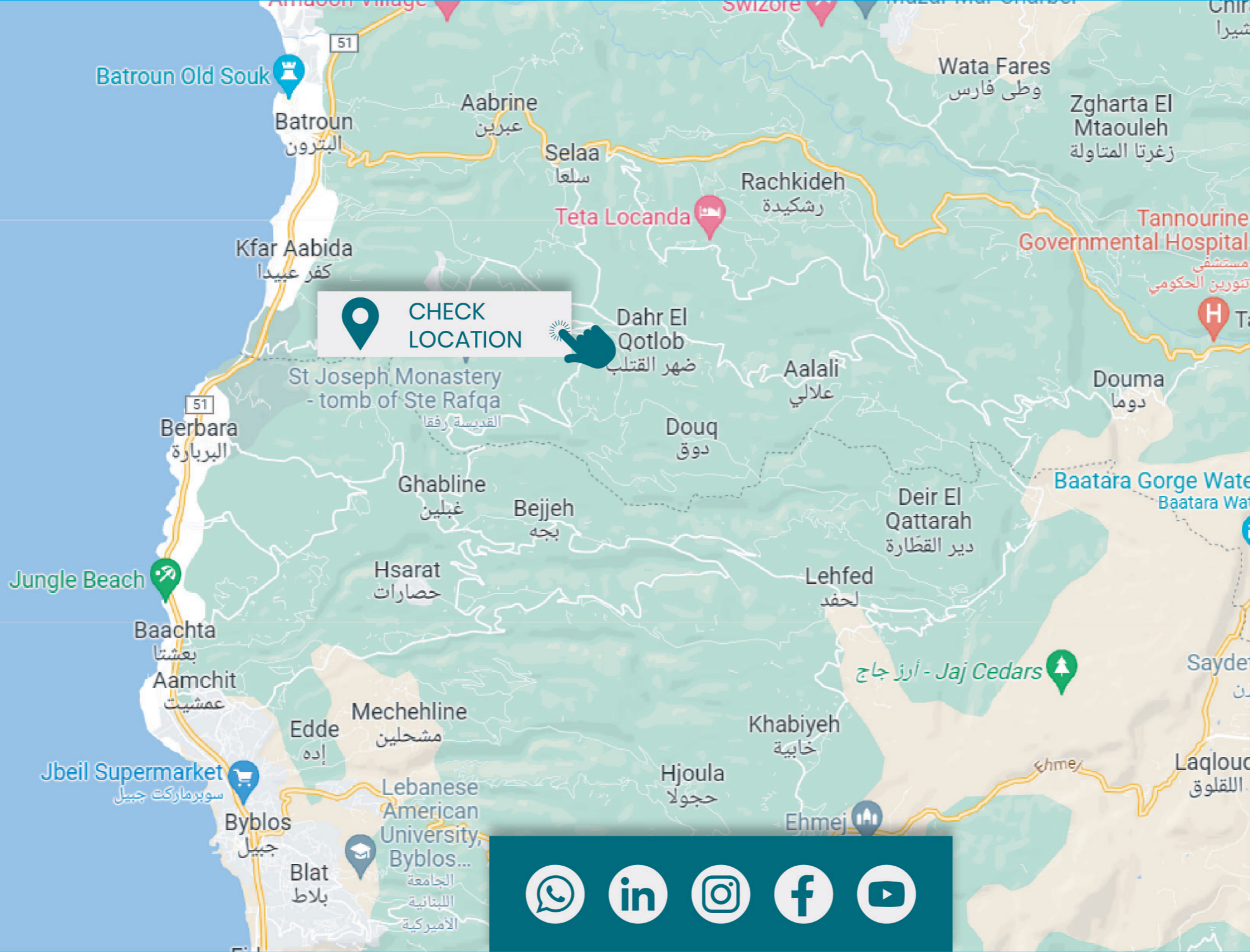
STANDALONE
BLOCK B



STANDALONE
BLOCK C







 CHECK
LOCATION

40

MINUTES FROM BEIRUT
TO NESMA

15

MINUTES FROM NESMA
TO BATROUN

10

MINUTES FROM NESMA
TO BYBLOS







 +961 81 777 103

info@phoeniciarealestate.net

www.phoeniciarealestate.net

